

Report of the 16-EUFA Interactive Session #4 Climate monitoring - ClimSA stations deployment

Ali Abani, ACMAD, Cotonou, 16th Sep 2024

Headlines

- 1) Scope of the Session #4
- 2) Summary of the presentation
- 3) Key messages from the Working Groups

Objectives:

- To inform participants of the outputs of CLIMSA programme, in particular the climate station that they will receive
- Inform and interact on the functionalities, of the Climate Station and related training.

Content of the session:

- 1 Introductory presentation on the ClimSA Station by JRC
- Splinter groups per region

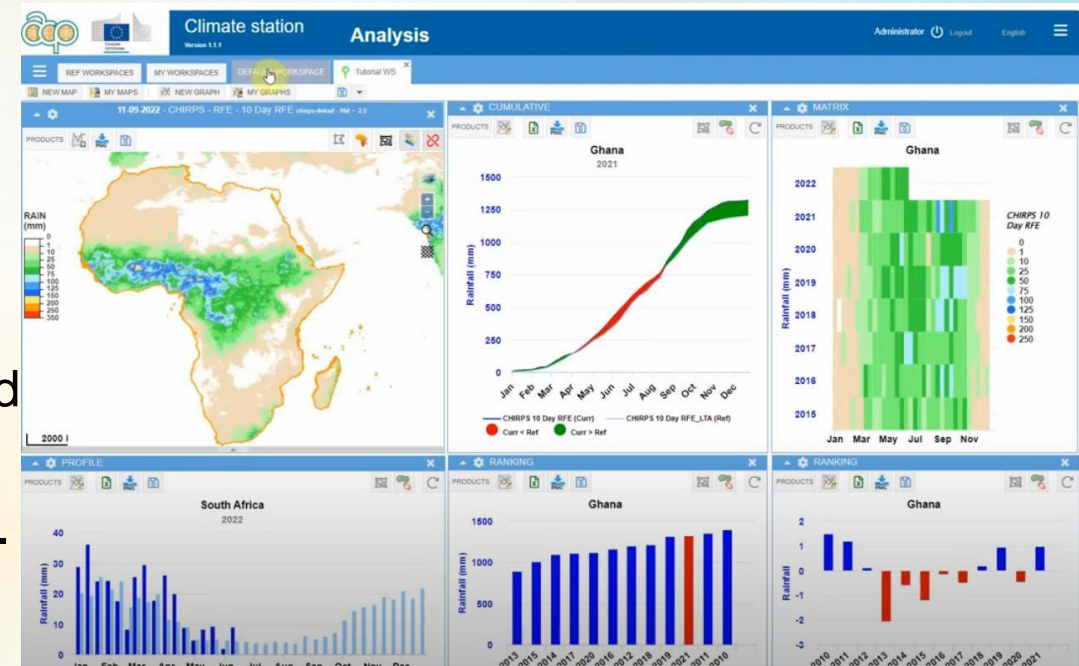
ClimSA Climate Station / JRC

The Climate Station is a free SW designed based on dialogue with RCCs and users that will establish/Improve access to the CSIS in operational context :

- Based on existing and past EU investments: Copernicus, AMESD-MESA-GMES&Africa
- Single entry point of the different datasets of Climate Data
- Required functionalities and application embedded
- Integrate in a seamless way CDR coming from different sources (EUMETCAST, Internet, cloud computing)

A prototype version installed at RCCs & to be deployed at national level (NHMSs) - SADC countries have already received the HW+SW

Some Trainings / workshops already organized / More to come.



User Interface

Working Groups organised per Region and chaired by the RCCs:

Purpose to collect feedback from NMHSs for their RCC about the features of the ClimSA Station.

WG #1 **Western Africa** (EN/FR)

WG #2 **Central Africa** (FR)

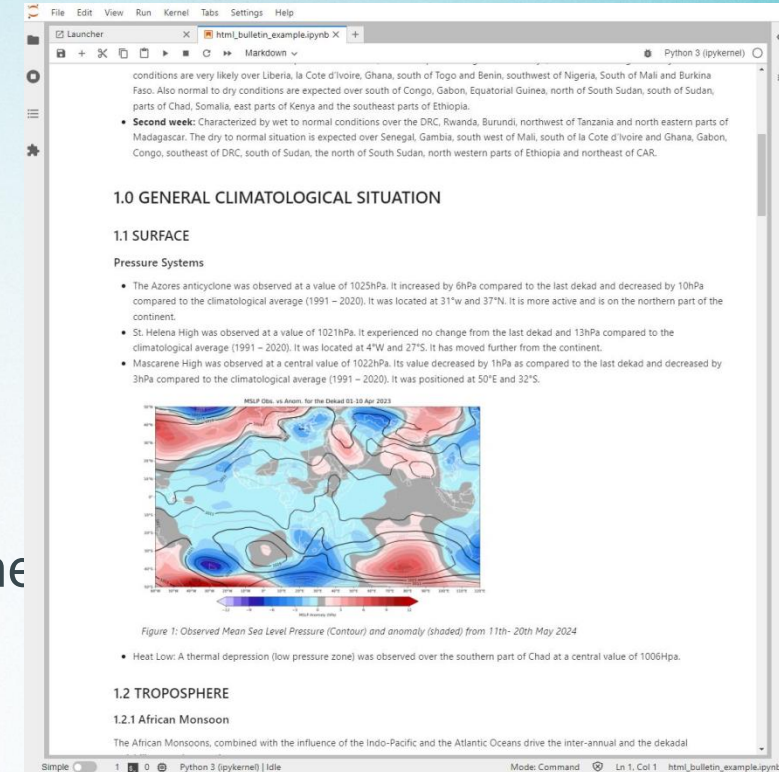
WG #3 **Southern Africa and Indian Ocean** (EN)

WG #4 **Eastern Africa** (EN)

For **North Africa** (WG#5) : Technical specification to install ClimSA station for North African NMHSs

Clarifications provided on :

- Design & functionalities of the Climate Stations and,
- Differences between Climate and eStations
- Products from the ClimSA Station / .Seasonal and sub-seasonal forecasts,
- Information on training,
- Ability of ClimSA Station to ingest field station data.
- Minimum internet bandwidth required for the proper functioning of the ClimSA station.
- Status of the ClimSA station deployment in the SADC region
- Inform how the ClimSA Station SW could installed and used in North Africa



Key messages :

Welcome the Climate-Station from JRC

Some countries have little or no climatological database, making the ClimSA station highly relevant, Role of RCC in ensuring a backbone of expertise on the station and reinforcing the capacities at the national level,

- The training plan should take into account the specificities of each country as diverse capabilities across different countries



Thank you!
Questions are welcome.