

# Climate, Agrometeorology and Blue Economy

16<sup>th</sup> EUMETSAT User Forum in Africa

**HIGHLIGHTS – 11 October 2024**

*Surekha Ramessur, SADC-CSC*

**Objectives:** showcase the use of EO satellite data in support to:

- **Climate Monitoring (2 presentations)**
- **Agrometeorology (8 presentations)**
- **Blue Economy (4 presentations)**

**Session dealt with:**

- Existing Data Products and Services,
- Building capacity opportunities,
- Activities at Continental, Regional and National level
- Cooperation btw the NMHS and the disaster management authorities

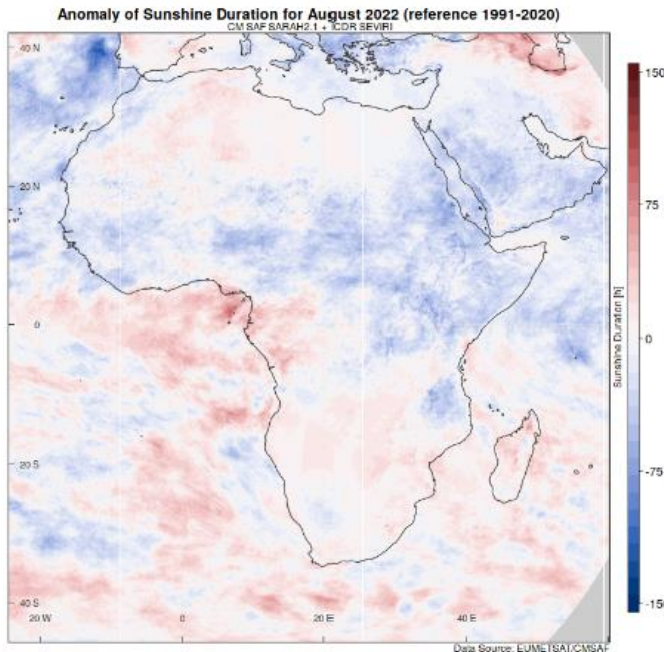
The **aim** is to facilitate exchange of experience and best practices among the users in Africa (from Africa to Africa)

## Climate Monitoring SAF data for Africa

Climate Data Records in connection with global energy and water cycle

Quality assurance and control mechanisms

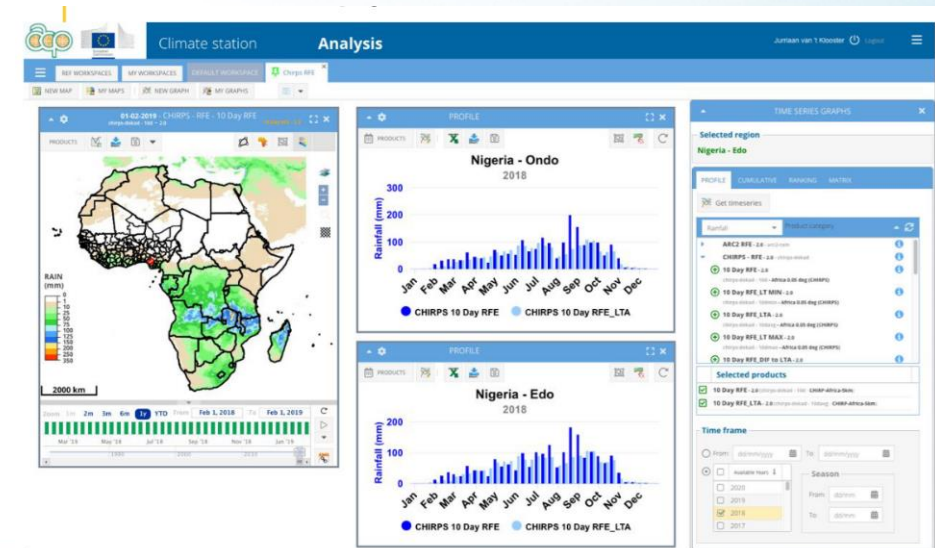
Free and easy access + tools to work with



## Climate Station / JRC

JRC contribution to ClimSA programme :

Climate Station: free SW designed based on dialogue with RCCs and users that will establish/Improve access to the CSIS in operational context .



## Climate Station User Interface



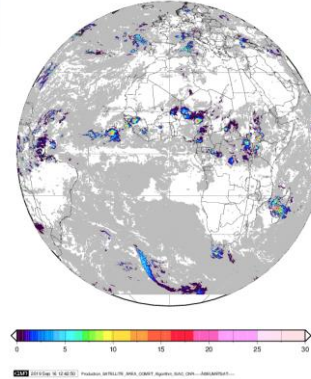
Examples of ClimSA and Agromet services and users experiences in:

- Continental (**ACMAD**)
- East Africa (**ICPAC**)
- West Africa (**AGRHYMET**)
- Central Africa (**CAPC-AC**)
- Southern Africa (**SADC**)

## TAMSAT and HSAF products for Agrometeorology

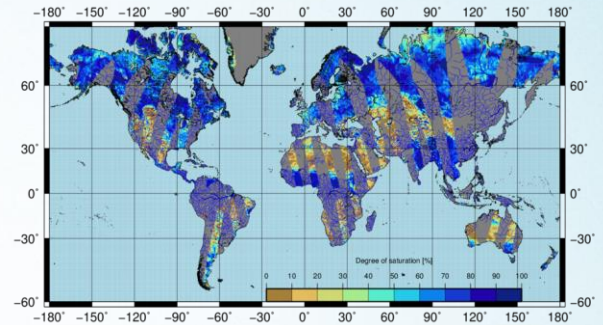
### HSAF PRECIPITATION

EUMETSAT H-SAF P-IN-SEVIRI  
Instantaneous Rain Rate retrieved from IR-MW blending data  
Blending of SEVIRI IR + SSM/I-SSMIS MW + AMSU MW 20190822 0000

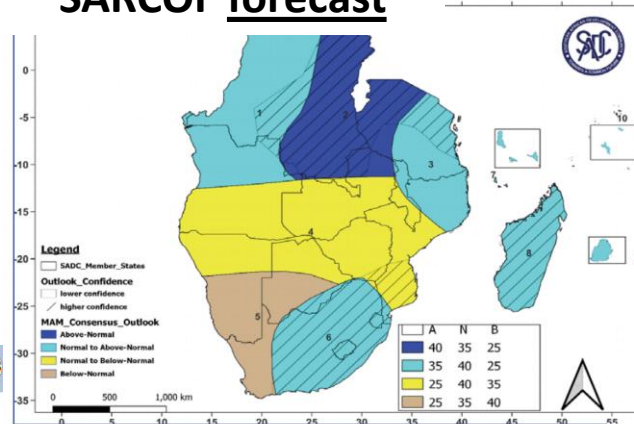


### HSAF SOIL MOISTURE

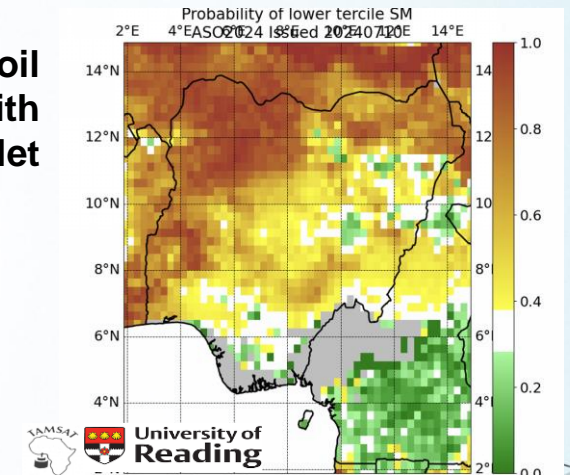
ASCAT soil moisture 20230818\_0210, Metop-B, 125



### SARCOF forecast



## TAMSAT Seasonal soil moisture forecasting with NiMet



Jour 2 : Journée du 28/08/2024

Carte de vigilance des Précipitations valide le 28/08/2024, Diffusée le 26/08/2024

Probabilité	Impact			
	Très Faible	Faible	Moyenne	Elevé
80%	2	7	10	10
60%	1	6	9	9
40%	4	4	8	8
20%	3	5	5	5
10%				

Prés de Précipitations Hydrométriques fortes (Cumul > 25mm)

Soyez Conscients du Risque

Soyez Préparés

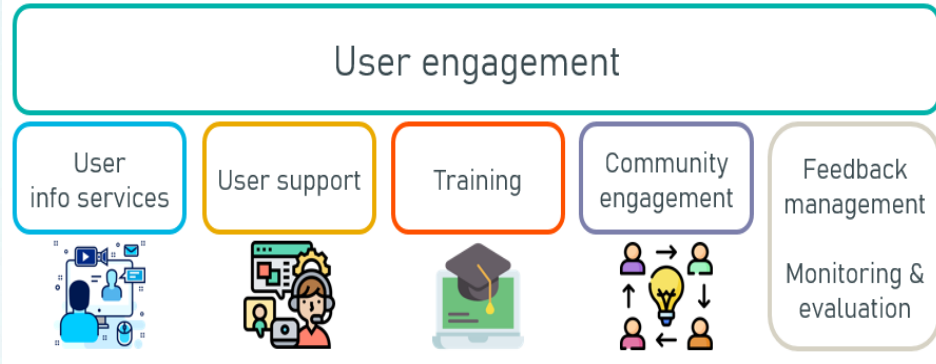
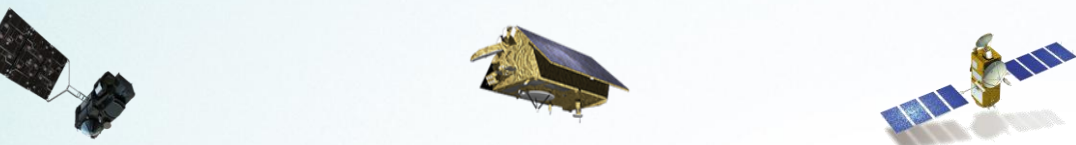
(4) A peu près probable que non d'avoir un cumul compris entre 25 et 50 mm.  
(7) Certainement Probable d'avoir un cumul compris entre 25 et 50 mm.

Impact			
Très faible	Faible	Moyen	Elevé
[0 ; 10mm]	[10 ; 25mm]	[25 ; 50mm]	≥ 50mm

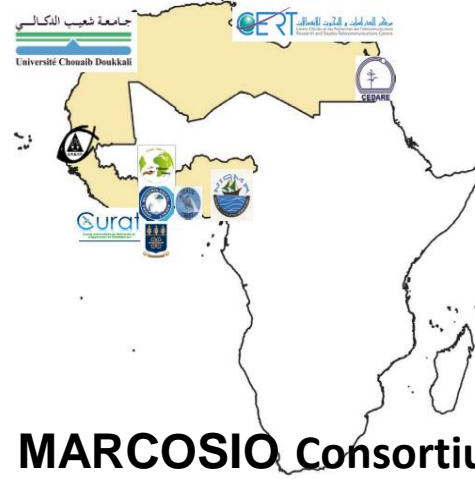
## Precipitation Vigilance map for Central Africa

Near real-time, and long-term data

## Marine User Engagement at EUMETSAT

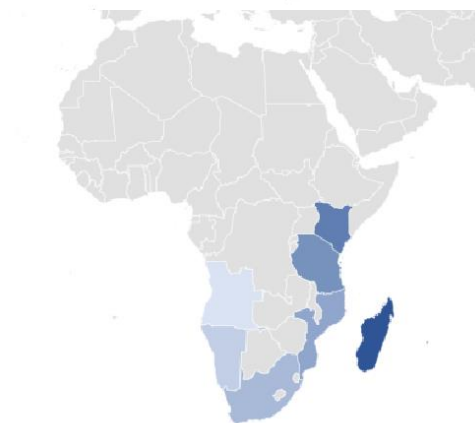


## MarCNoWA Consortium



Shoreline change map of West Africa

## MARCOSIO Consortium



Coastal monitoring in Benin



Collaboration on training courses

## Climate Monitoring

- Integration of CM SAF data in Climate station
- Needs for African Tailored Subseasonal forecasts products

## Agrometeorology

- Integration of HSAF, TAMSAT into existing agromet platforms
- Access online TAMSAT and H-SAF training material
- Availability and use of Copernicus Climate Change Service (C3S) via ClimSA Station

## Blue Economy / GMES&Africa Marine and Coastal services

- Extent the geographic coverage&impact
- Cooperation with NMHS when engaging with user communities at national level.