

MTG and PUMA-2025

16th EUMETSAT User Forum in Africa

HIGHLIGHTS – 11 October 2024

Sarah Kimani, IMTR/KMD

MTG is now a reality in Africa

- 1) MTG data are available on EUMETCast-Africa
- 2) First PUMA-2025 stations are installed, system was demonstrated
- 3) NMHSs are informed on deployment and training

While waiting for your PUMA-2025 stations: MTG data is now available on EUMETView:

The screenshot displays the EUMETView interface. On the left, a sidebar lists satellite channels and products. The main area shows a satellite view of Africa with a data layer overlay. A control panel on the right allows for layer management and viewing options.

Satellite

Search / Satellite

Channels

- FCI HRFI IR10.5 μm Image - MTG - 0 degree**
Rectified (level 1c) Meteosat FCI IR10.5 resolution (1km). Level 1c image here
- FCI HRFI VIS0.6 μm Image - MTG - 0 degree**
Rectified (level 1c) Meteosat FCI VIS0.6 resolution (0.5 km). Level 1c image here

Visualized Products

RGB Composites

- Cloud Phase RGB - MTG - 0 degree**
Cloud Phase is an RGB that aims to provide information on cloud-top part
- GeoColour RGB - MTG - 0 degree**
GeoColour is a visualisation that combines the visible channels to create a natural color map. For the daytime part of the full disk
- True Colour RGB - MTG - 0 degree**
The True Colour RGB provides natural color during the daytime. The channels sensed

EUMETView

Eumetsat View * Add layers +

Layers

- GeoColour RGB - MTG - 0 d... X
- High Rate SEVIRI IR10.8 μm ... X

Overlays

Basemap

Projection

View description

Eumetsat View
MTG GeoColour RGB with MSG IR10.8 in the background

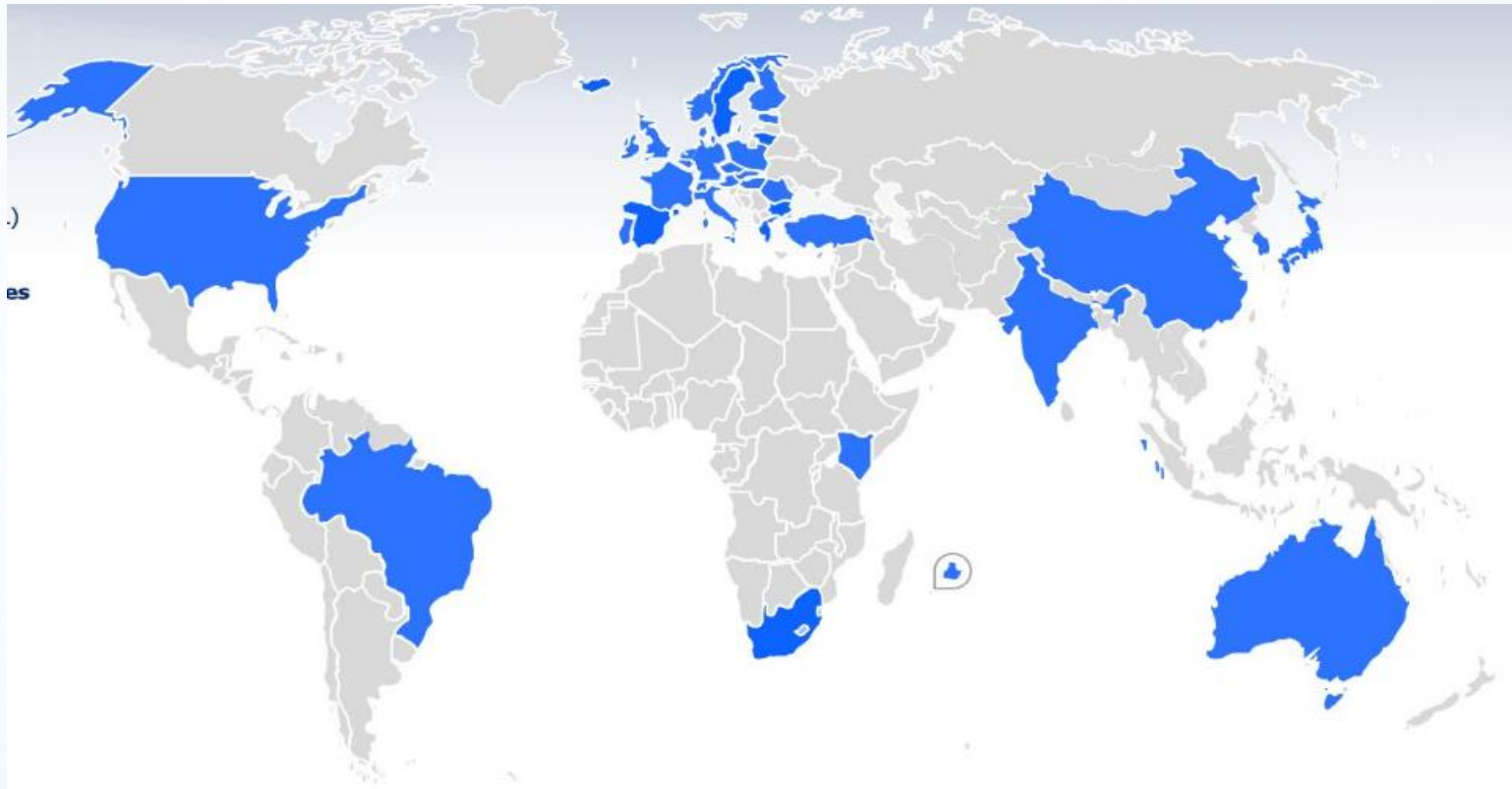
September 2024 October 2024

2024 Oct 11 07 : 00 UTC

High Rate SEVIRI IR10.8 μm Image - MSG - 0...

While waiting for your PUMA-2025 stations: Engage with NREN for a EUMETCast-Terrestrial connection for full access to MTG data

ECast Terrestrial Users Map (May 24)



Session objectives:

- Status of transition to Meteosat Third Generation (MTG)
- MTG Data access
- Presentations and discussions on PUMA-2025 and Climate Stations

4 presentations:

Working groups on PUMA-2025 and Climate Stations

Démo sessions on PUMA-2025 and Climate Stations



Until end Oct 24	Until end Nov 24	Until mid 2025	
<ol style="list-style-type: none"> 1. Met-10 SEVIRI Met-10 is prime 2. MTG-I1 LI + FCI in commissioning 	<ol style="list-style-type: none"> 1. Met-10 SEVIRI Met-10 is prime 2. Met-12 LI operational 3. Met-12 FCI commissioning 	<ol style="list-style-type: none"> 1. Met-10 SEVIRI Met-10 is prime 2. Met-12 LI operational 3. Met-12 FCI backup operational 	<ol style="list-style-type: none"> 1. Met-12 FCI Met-12 is prime 2. Met-12 LI operational 3. Met-10 SEVIRI backup operational



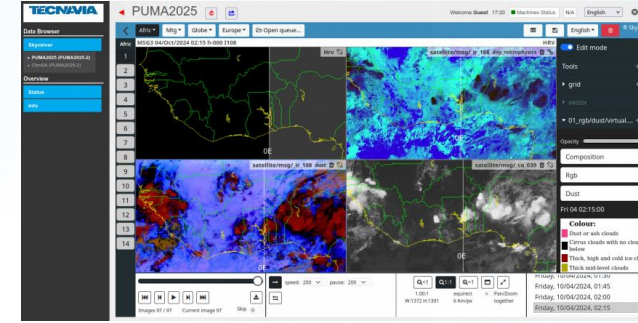
Service Contract signed in November 23 with Tecnavia SA,

- Pre-deployment Survey on status of PUMA 2015 underway
- FAT successfully conducted in May 24'

AUC Coordination:

- Bi-weekly follow up meetings
- Member States informed and contact established between the supplier and NMHS for custom clearance

Already deployed in Kenya, Gambia, Benin, EAMAC, Botswana ACMAD to be continued



Three (03) steps of Training:

Onsite training: during the Installation

Online Training: Through a LMS with Modules: both for ToT & NMHSs (under discussion)

Classroom Training:

- **Training of Trainers:** 1 System Admin & maintenance + 1 operation & forecasting: Nominated Training experts (17 IT + 21 PUMA + 15 ClimSA)
- **Training of NMHS:** System Admin & maintenance + operation & forecasting: 2 Trainees per country by the Trainers from ToT

Training of the trainers : November 2024 at IMTR for All

- Update of the EUMETSAT Earth Observation Portal (EOP) Point of Contact
- Facilitation of customs clearance of the equipment
- Presence of IT personnel during the stations deployment and installation
- Training Plan and number of staff trained per type of training and per NMHS
- Connection to EUMETCAST terrestrial that will allow access to all MTG data & products
- NMHS to use EUMETView as a back-up to EUMETCast, and to visualize MTG data while the PUMA-2025 are being deployed.
- Access to training materials and information on EUMETView and EUMETCast-Terrestrial.

Visit the EUMETSAT User Portal:
<https://user.eumetsat.int/dashboard>

THANK YOU